

UTLC

Eurasian
Rail Alliance

LEADER OF RAIL
CONTAINER TRAFFIC
ON NEW SILK WAY
ROUTES

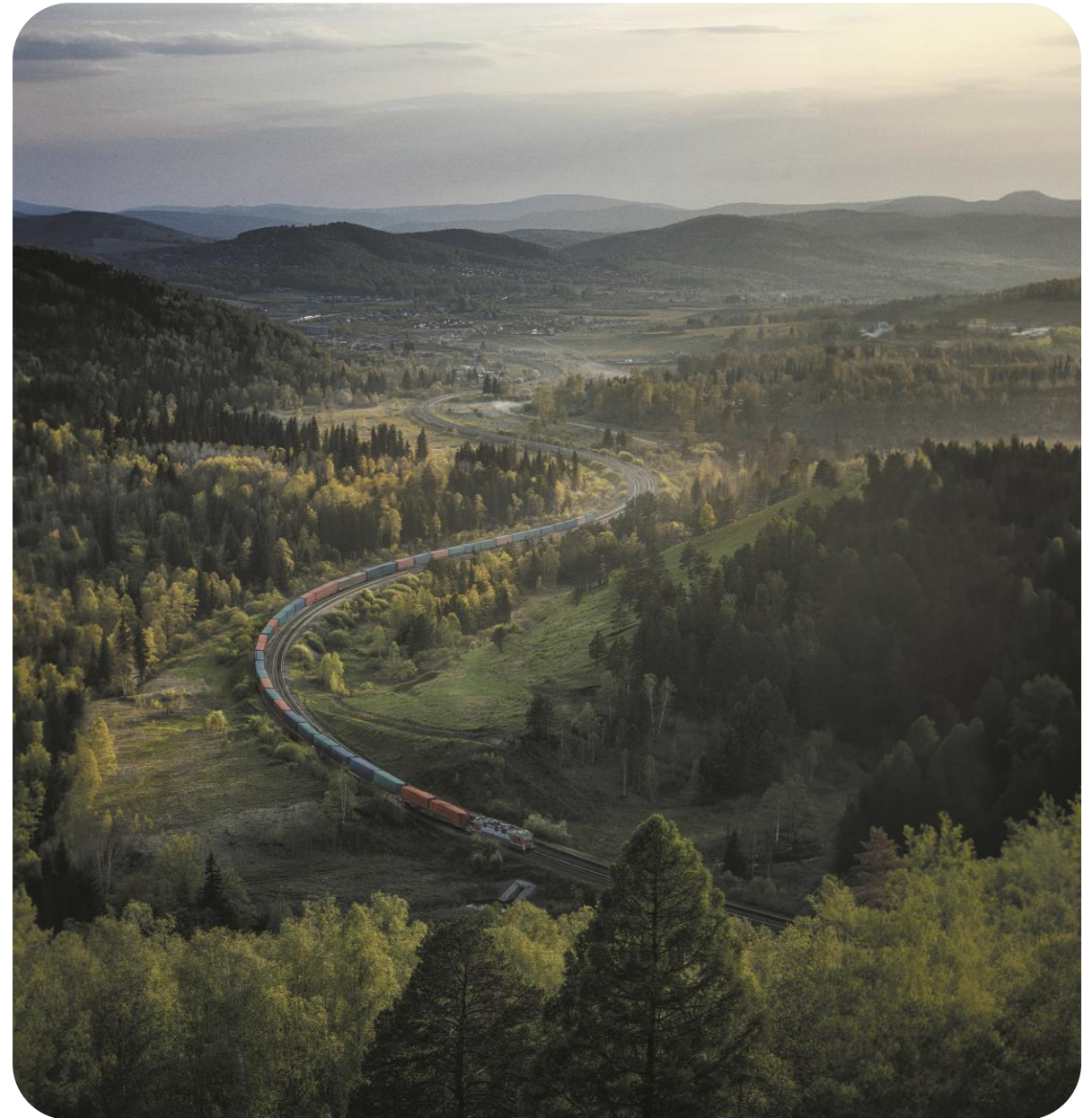
CHN → KZ * RU → EU
→ KZ * BY → EU ← BY
RU * → EU ← CHN
CHN → O RU BY → EU
KZ RU BY ← CHN RU
CHN → KZ * RU → EU
RU * → EU ← CHN
'Z RU BY ← CHN'
'Z * BY → EU ←'
~ ~ ~

**UTLC ERA, JSC (UNITED TRANSPORT
AND LOGISTICS COMPANY - EURASIAN
RAIL ALLIANCE) IS A MAJOR PROVIDER
OF CONTAINER TRAFFIC LOGISTICS
SERVICES IN EURASIA**

**A UNIQUE EXAMPLE OF SUCCESSFUL
INTEGRATION IN THE EAEU**

MISSION

To become a driver of the Eurasian
economic space development through
the creation and implementation
of effective logistics solutions



JOINT PARITY-BASED PROJECT



33,3%

Joint Stock Company
"Russian Railways"



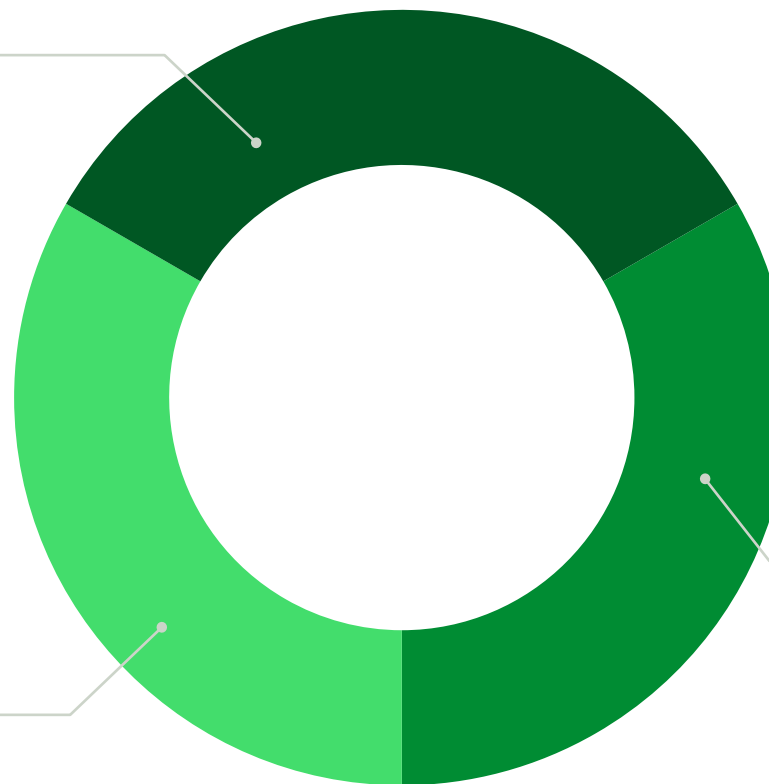
33,3%

Joint Stock Company
"National Company
"Kazakhstan Temir Zholy"



33,3%

State Association
"Belarusian Railway"



ROUTES MAP



ROUTE MAP

Europe

Amsterdam
Antwerp
Brake
Bremerhaven
Brno
Budapest
Burghausen
Busto Arsizio
Ceska-Trebova
Cologne
Duisburg
Durj
Felixstowe
Fredericia
Gdansk
Gdynia
Genk
Ghent
Gliwice
Gondki
Gorzow-Wielkopolski
Gothenburg
Hamburg
Hannover
Helsinki

Immingham
Joensuu
Katowice
Kolin
Kotka
Kouvola
Kutno
Liege
Lodz
London
Lovosice
Ludwigshafen
Luxembourg
Lyon
Madrid
Malaszewicze
Mannheim
Melzo
Milan
Munich
Neumarkt
Neuss
Nuremberg
Obernitz
Oslo

Pardubice
Paris
Poznan
Prague
Pruszków
Regensburg
Rheinhausen
Rostock
Rotterdam
Rzepin
Sassnitz
Siemianówka
Slawkow
Taulov
Tilburg
Vaidotai
Valenton
Vienna
Verona
Villach
Vilnius
Vuosaari
Warsaw
Wilhelmshaven
Wroclaw

Belarus

Baranovichi
Barbarov
Brest
Bruzhi
Cherveno
Goryn
Kalinkovichi
Kolyadichi
Lupolovo
Mogilev
Mularovka
Orsha-Vostochnaya
Kaliy I
Kaliy II
Kaliy IV
Shabany
Svetlogorsk- na-Berezine
Svislach
Vitebsk
Yelsk
Zadneprovskaya
Zhabinka
Zhodino

Russia

Avtovo
Apparatnaya
Bazaiha
Baltiysk
Bezymyanka
Beliy Rast
Bronka
Chernikovka
Chernyahovsk
Dzerzhinskaya-Novaya
Elektrougli
Kaliningrad
Kleshchiha
Koltsovo
Kostariha
Kresti
Krugloe Pole
Khovrino
Kupavna
Luzhs kaya
Magnitogorsk- Gruzovoy
Noviy Port
Orekhovo-Zuevo
Sbornaya-Ugolnaya
Selyatino

Silikatnaya
Shushary
Tikhonovo
Vorotynsk
Vorsino
Yekaterinburg
Zanevskiy Post

Kazakhstan

Aktau-Port
Aktobe II
Almaty I
Altynkol
Atyrau
Burunday
Dostyk
Egilik
Karaganda
Kokshetau
Kostanay
Kyzylzhar
Kyzylorda
Medeu

Nur-Sultan I
Oskemen I
Pavlodar-South
Ridder
Sairam
Sorokovaya
Shymkent
Ust-Talovka
Zhety-Su

ROUTE MAP

China

Alashankou	Doulaying	Kashgar	Nongzhong	Taishan	Xiayuan
Akesu	Foshan	Khingan	Pinghunan	Taiyuan	Xining
Bangda	Ganzhou	Khorgos	Putian	Tangshan	Xinjiang
Beijing	Gaoyi	Korla	Qingdao	Tianjin	Xinzhou
Changping	Guangyuan	Kuitun	Qingzhou	Tongshan	Xuzhou
Changsha	Guangzhou	Lanzhou	Rizhao	Tuanjiecun	Yantai
Chengdu	Guiyang	Lianyungang	Sanpin	Urumqi	Yinchuan
Chengxiang	Gunxing	Linyi	Shanghai	Weihai	Yiwu
Chenzhou	Hami	Luzhou	Shangrao	Wendeng	Yuzui
Chongqing	Hefei	Mianyang	Shanshan	Wuhan	Yuergou
Dalang	Huangxuzhen	Minhan	Shenyang	Wuwei	Zaojiaopu
Dalian	Jiangmenbei	Nanchong	Shenzhen	Wuxi	Zaozhuang
Deyan	Jianyingang	Nankai	Shihezi	Wuyishan	Zengchengxi
Dong Fu	Jiaozhou	Nanjing	Shijiazhuang	Xi'an	Zhengzhou
Dongguan	Jinan	Nanning	Shilong	Xiamen	Zhubao
Dongjiazhen	Jinhua	Nansha	Suzhou	Xiaonanya	

SERVICES

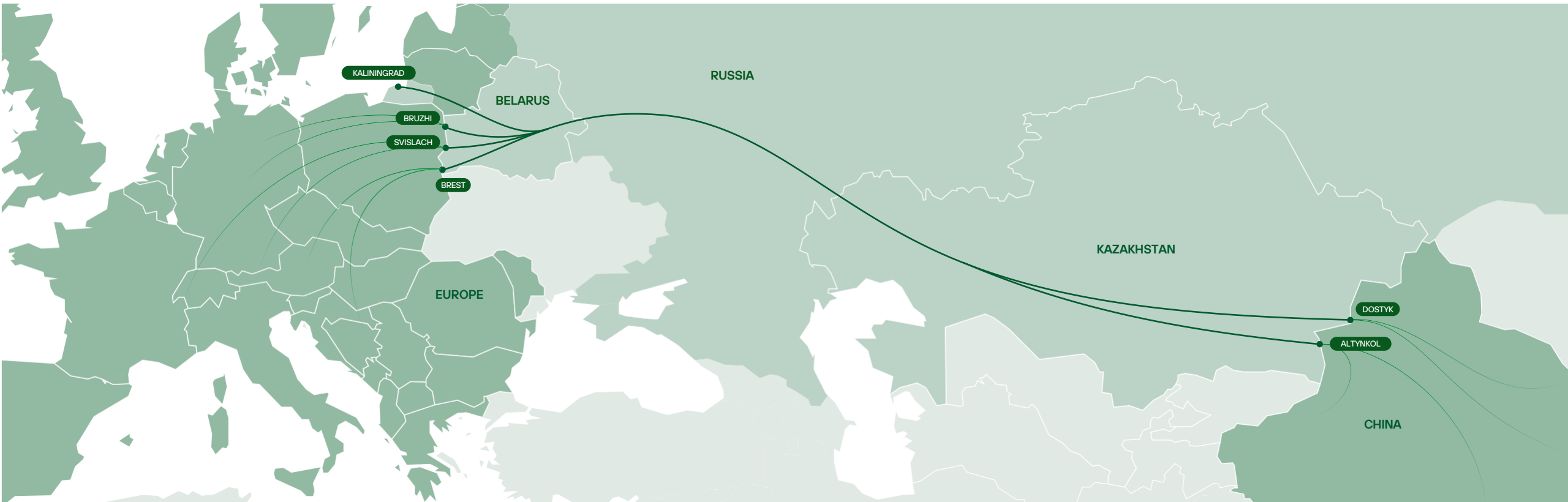
UTLC ERA provides a set of transportation and logistics services to transfer Shipper Owned Containers, or SOC, by regular container block trains in the East-West International Transport Corridor




No container is foreseen

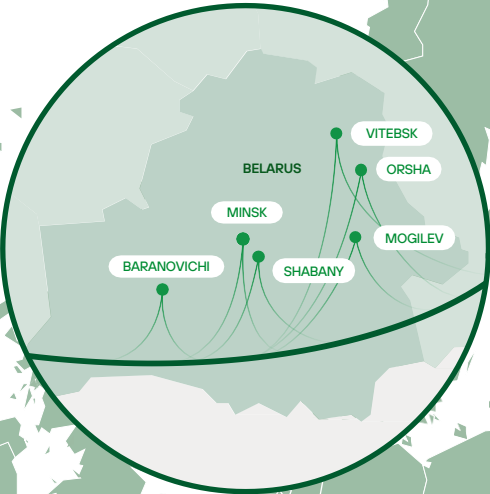
TRANSIT

China (Dostyk/Altynkol) – **Europe** (Brest/Bruzhi/Svislach/Kaliningrad) routes via Kazakhstan, Russia and Belarus



SERVICES

 No container is foreseen

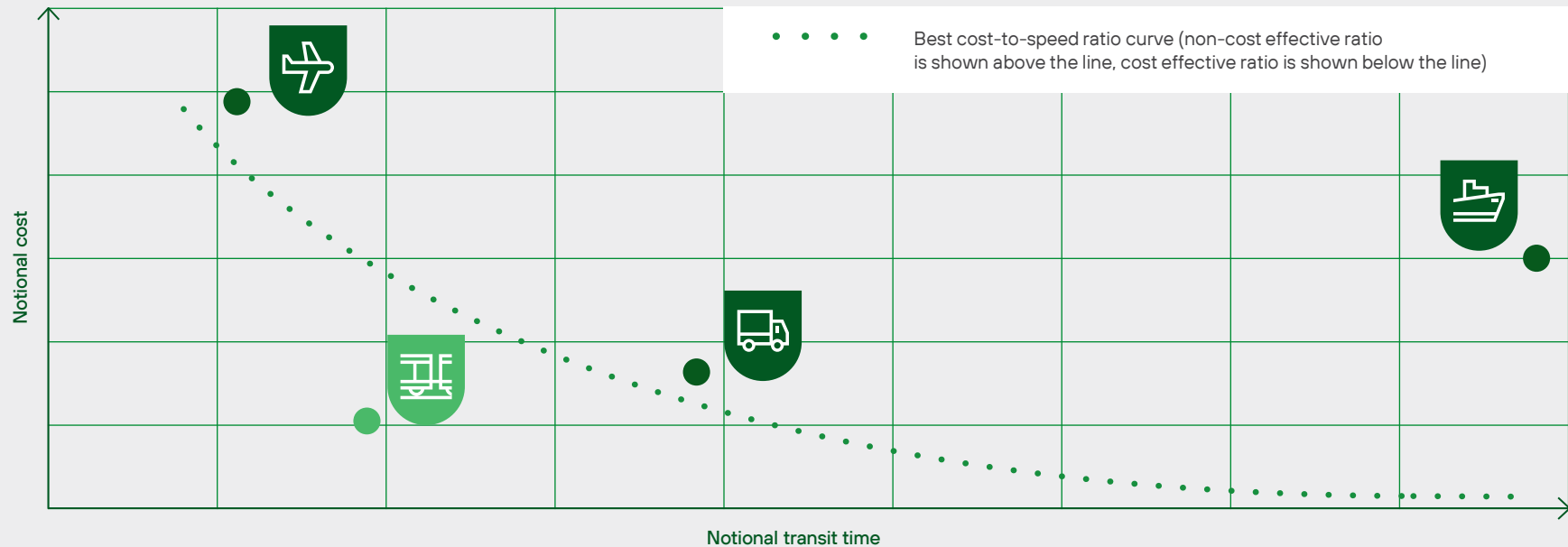


IMPORT FROM CHINA
Routes from China to Russia and Belarus
via Dostyk/Altynkol border crossings

EXPORT TO CHINA
Routes from Russia and Belarus to China
up to Dostyk/Altynkol border crossings

COST EFFECTIVE PRICE-TO-SPEED RATIO

Cost and speed compared by modality types



EURASIAN RAIL INDEX (ERA):

Cost and transit time

~\$3 292/FEU
rate

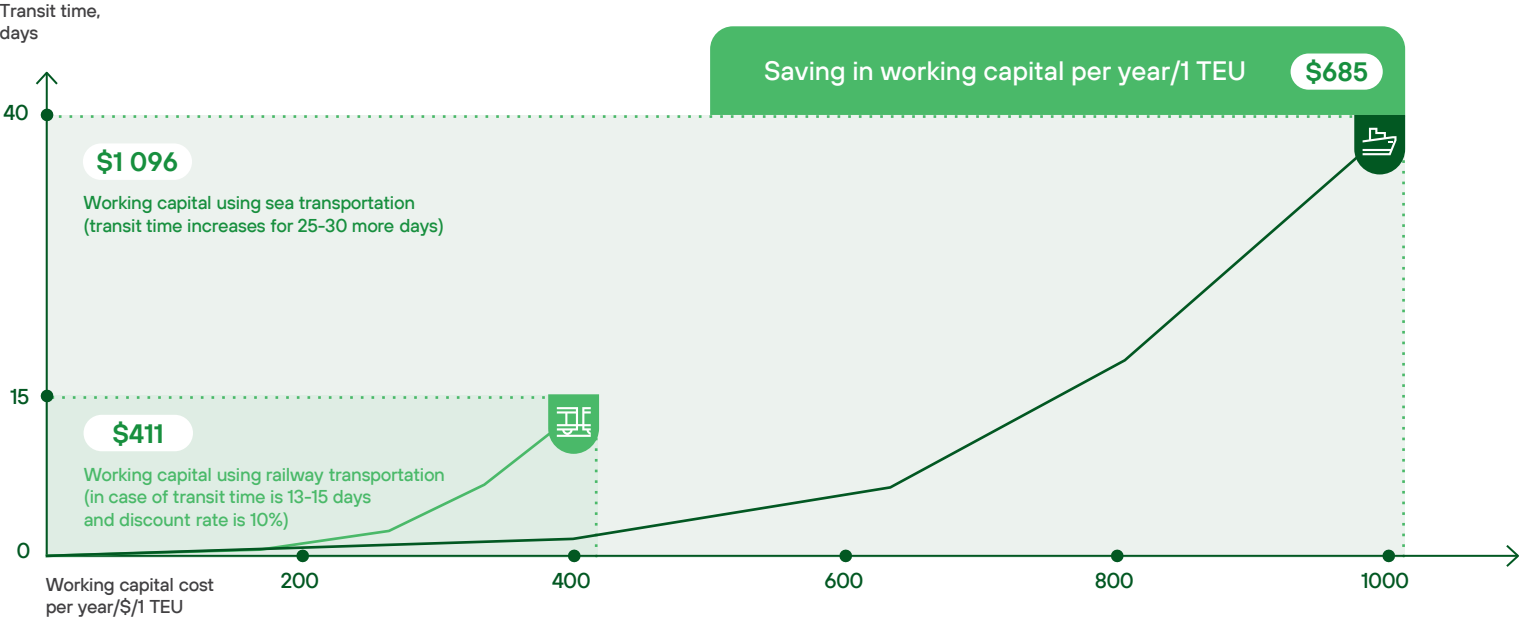
5 TO 7 DAYS
transit time

BELARUS

RUSSIA

KAZAKHSTAN

For example, if annual transportation volume is **5 000** containers and the price of cargo in one container is **\$100 000**, saving in working capital is not less than **\$3 million**. The more expensive cargo is transported, the greater benefit you get



5 000

Working capital
cost per year/\$/1 TEU

10%

Discount
rate

40 days

Transit time
by sea

15 days

Transit time
by railway

\$100 000

Average cargo cost per 1 TEU
(equal for sea and railway transportation)

\$3 424 658

Saving in working capital per year
within a given volume

EU → BY RU KZ → CHN



SPEED

5 TO 7 DAYS

from the Chinese border
to the EU border

3 TO 5 TIMES

faster than sea delivery



SECURITY

99,997%

cargo safety level



STABILITY

20-30

average daily number of trains



RELIABILITY

all-weather shipping

>760

ROUTES

>250

CARGO ORIENTATION
AND OFFLOAD LOCATIONS

~89%

4-DIGIT LEVEL HS CODES
ARE TRANSPORTED
IN UTLC ERA SERVICES

THE PRODUCTS MADE BY THE LARGEST MANUFACTURERS IN EURASIA ARE TRANSPORTED USING UTLC ERA SERVICES

Cost of TOP-20 products categories delivered using UTLC ERA services in 2024, \$ billion

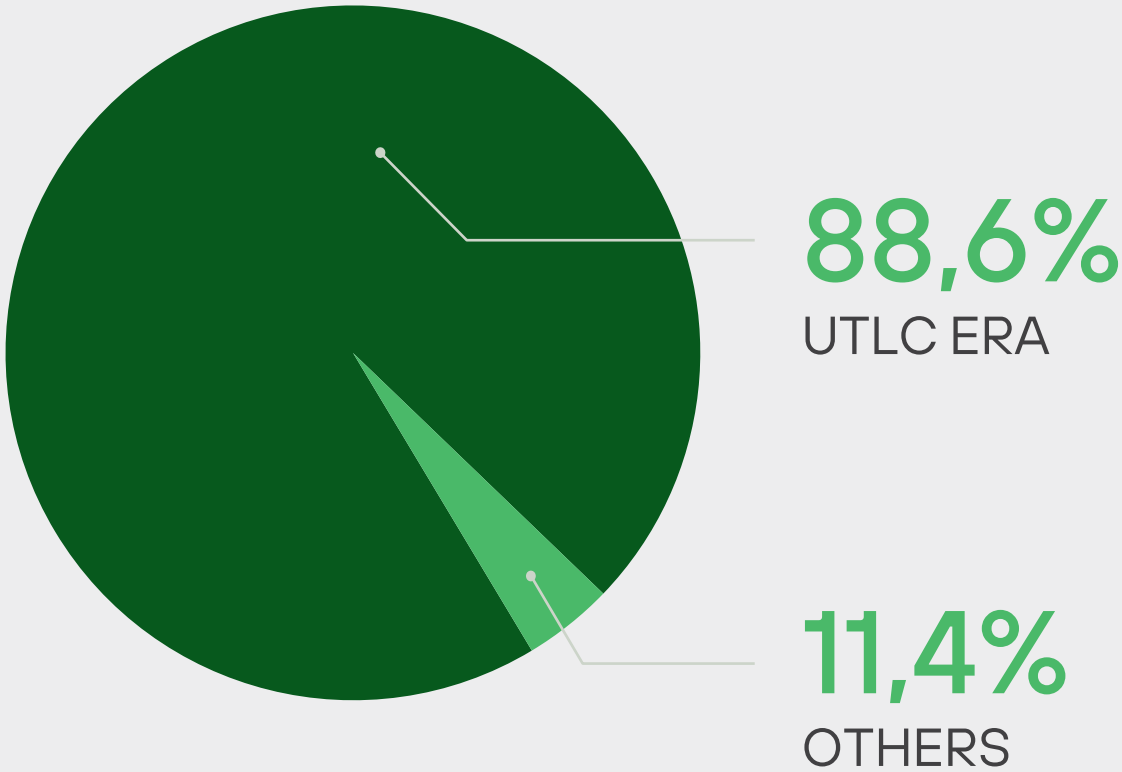
TOTAL COST OF TRANSPORTED GOODS IS

\$41,6 BILLION

that is 17,8% more than in 2023



UTLC ERA SHARE OF CHINA-EUROPE-CHINA CONTAINER TRANSIT IN 2024



4 054 094 TEUs

total transportation volume since UTLC ERA foundation, including 745 926 TEUs transported in 2024, which is 2,7 times more than volumes in 2018



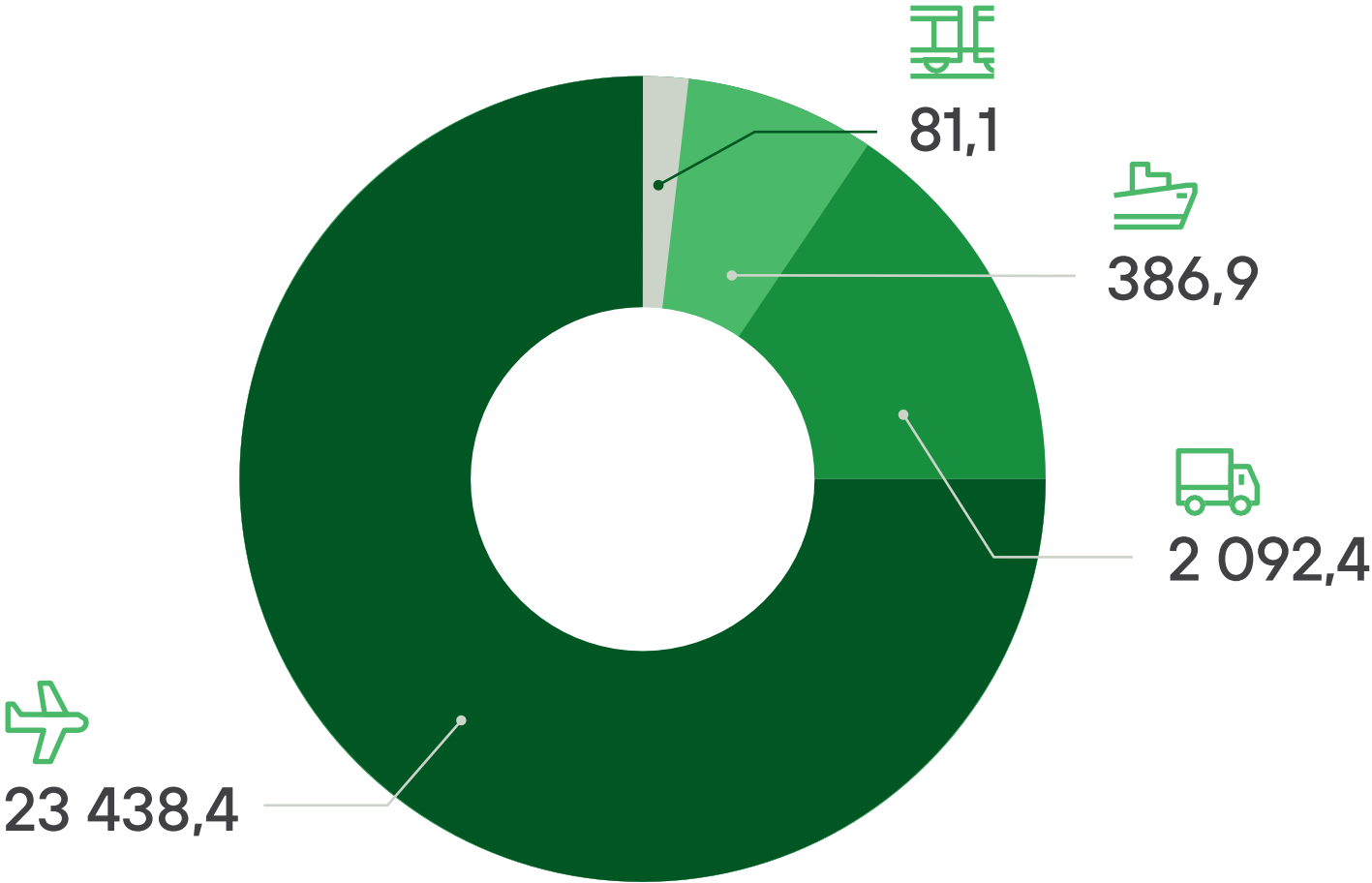
Results achieved jointly with the largest forwarding partners. To get a rate for the door-2-door service, please contact our partners

ECOLOGY

- In 2019 a proprietary CO₂ assessment system was developed
- Companies that used UTLC ERA services in 2023 contributed to the decarbonization of the economy by at least 271,5 thousand tons of CO₂

Direct emissions generated by UTLC ERA compared with other means of transport* in 2024, million tons CO₂

*With the same input data



EU → BY RU KZ → CHN

RAIL TRANSPORTATION IS MORE ENVIRONMENTALLY FRIENDLY



BY 5 TIMES

as compared
to sea transportation



BY 26 TIMES

as compared
to road transportation

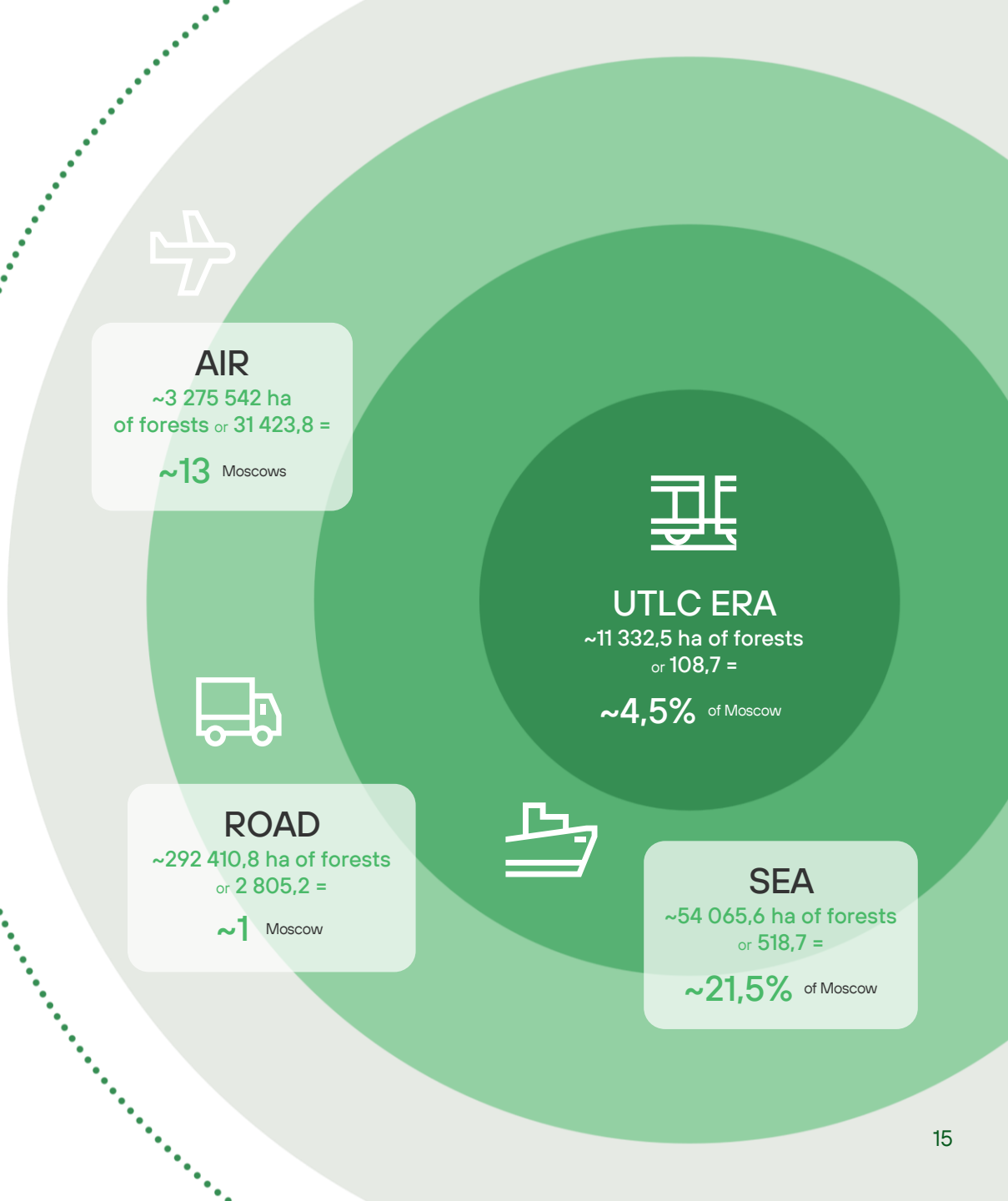


BY 289 TIMES

as compared
to air transportation

Carbon footprint
due to traffic
of 1 million containers,
thousand tons CO₂

#KEENONGREEN



UTLC

Eurasian
Rail Alliance

Building 7, 8 Sadovaya-Chernogryazskaya Street, Moscow

+7 (495) 995-95-91

utlc@utlc.com



More information about the company
is available at www.utlc.com

CHN → KZ * RU → EU
→ KZ * BY → EU ← BY
RU * → EU ← CHN
CHN → O RU BY → EU
KZ RU BY ← CHN RU
CHN → KZ * RU → EU
RU * → EU ← CHN
'Z RU BY ← CHN'
'Z * BY → EU ←'
~ ~ ~ ~